

## TABLE OF CONTENTS

### COMPANY OVERVIEW

ABOUT MANDY LI COLLECTION.....	3
DEFINED BY QUALITY .....	4
NOTE FROM MANDY LI.....	5
THE MANDY LI PROMISE.....	6
GREEN INITIATIVES.....	7
LICENSE AND CERTIFICATIONS.....	8

### HOSPITALITY PORTFOLIO

INTRO.....	9
HOSPITALITY INSTALLATIONS.....	10
DINING ENVIRONMENTS.....	12
HILTON MABRISA RESORT.....	13
JONATHAN CLUB.....	14
DRIFTWOOD WORLDGATE RESORT.....	15
VANITY BASE INSTALLATIONS.....	16

### DOORS & HARDWARE

INTRO.....	17
MATERIALS & SPECIFICATIONS.....	18
DOORS.....	19
DOOR TRACK AND GLIDE SYSTEM.....	28
DOOR FRAMING / CASING.....	29
DOOR HANDLES.....	30
DOOR FLUSH PULLS AND HINGES.....	31

### CUSTOM FABRICATION

INTRO.....	33
TABLES, CONSOLES AND CHAIRS.....	34
VANITIES.....	44

### SURFACE MATERIALS

INTRO.....	49
ABOUT JADE WOOD.....	50
JADE WOOD COLOR SAMPLES.....	51
GRANITE COLOR SAMPLES.....	52
MARBLE COLOR SAMPLES.....	53
QUARTZ COLOR SAMPLES.....	54

### SHOP DRAWINGS

INTRO.....	57
SHOP DRAWINGS.....	58
CONTACT INFORMATION.....	62



**Granite**

**Quartz**

**Marble**

**Interior Doors**

**Vanity Bases**

**Custom Cabinetry**

**Custom Furniture**

### CORPORATE HEADQUARTERS

617 South Raymond Avenue, Alhambra, CA 91803-1534

Toll Free 877.497.8663 | Phone 626.457.1022 | Fax 626.457.1651

[info@MandyLiCollection.com](mailto:info@MandyLiCollection.com)

[www.MandyLiCollection.com](http://www.MandyLiCollection.com)

CORPORATE PARTNER

**NEWH**  
The Hospitality Industry Network

*The illusion expensive...the reality affordable.®*





**MANDY LI**  
COLLECTION

**Since their inception in 1997, Mandy Li Collection has developed into the most value driven furnishing source in the hospitality and multi-family industry.**

Mandy Li Collection offers, through its national sales team, a comprehensive range of natural stone and quartz to enhance and complete the standard offering as well as custom made vanity bases and kitchen cabinets. In addition, FF&E and interior doors are built to meet your requirements are part of our portfolio. From the architectural concept to the creation of the "Collection," Mandy Li herself promises "you will receive unsurpassed excellence."

Mandy Li Collection is built on value. Designed to enhance your client's environments, our solutions are created with your needs in mind. Quality and budget, plus an unwavering desire to ensure you are WOWed by our service, are some of the reasons Mandy Li Collection has been chosen by so many top companies. Below are just a few who have utilized our services:

<b>Hilton Worldwide</b>	<b>Hilton MarBrisa Resort (Timeshares)</b>
<b>Marriott International</b>	<b>Marriott Vacations Worldwide</b>
<b>Hyatt Hotels</b>	<b>InterContinental Hotels</b>
<b>Starwood Hotels</b>	<b>Starwood Vacation Ownership</b>
<b>Alliance Residential</b>	<b>Caesars Entertainment</b>
<b>Turner Construction</b>	<b>Swinerton Builders</b>
<b>Target Commercial Interiors</b>	<b>Wyndham Worldwide Sourcing Solutions</b>

We are proud that our company sets itself apart by the dedication of its employees. Headquartered in Los Angeles, California, our day-to-day operations, including the warehouse, estimating, project management, field measurements, architectural takeoff and CAD are all handled by experts in their field. You can be sure that our staff across the USA will serve you to the fullest and be with you every step of the way, ensuring your project is on time every time.

Our Los Angeles HQ is complimented by our office in China. Our main manufacturing facility, consisting of 550,000 square feet, is in Xiamen, and we also have satellite facilities in Shanghai and Guangdong. Quality control is a key component of any manufacturing facility. Mandy Li Collection is not only vested in the manufacturing facilities but controls the monitoring of all production, ensuring that the product is of consistently high quality. Our professional engineering specialists are leaders in the industry, and our workers are highly trained.

We are proud that our clients give testimony to our dedication to quality during every facet of the manufacturing process.

“The attention to detail, fabrication and deliveries are first rate.”

– Easton's Group of Hotels,  
Marriott and Hilton Projects

## DEFINED BY QUALITY

**Mandy Li Collection thrives in ensuring that the highest level of quality is always delivered through all of our services and product offerings.**

Cross cultural communication sets us apart from other manufacturers and is critical to the success of your project and our company. Our Los Angeles HQ communicates not only in Chinese but also ensures the cultural divide is crossed when communicating our client requirements to our office in China. Our main manufacturing facility (550,000 square feet) is in Xiamen, and we also have satellite facilities in Shanghai and Guangdong. Quality control is a key component of any manufacturing facility. Mandy Li Collection is not only vested in the manufacturing facilities but controls the monitoring of all production, ensuring that the product is of consistently high quality. Our professional engineering specialists are leaders in the industry and our workers are highly trained.

Our millwork factory is certified and all wood products are certified for ISO 9001: 2000 Standard. We fully comply with the California Air Resource Board (CARB), and Airborne Toxic Control Measure (ATCM) to reduce formaldehyde emissions from composite wood products, including plywood, medium density fiberboard (MDF), and particle board (PB). All of our wood sources are purchased from Certified CARB-approved manufacturers. Mandy Li Collection will conform to and meet WI–Woodwork Institute standards nationally. Equipment is regularly upgraded to ensure that Mandy Li Collection remains at the forefront of advanced manufacturing technologies. Our case goods construction consistently meets and exceeds standards and specifications considered as environmentally safe regarding wood and bamboo products. In addition, Mandy Li Collection can meet certification of the FSC (Forest Stewardship Council AC.) regarding all wood products using the Woodmark chain of custody standards RT-COC-001.







“My main focus has always been to consistently provide complete customer satisfaction through quality products and expert services.”

## NOTE FROM MANDY LI

When I was a child, I used to ask my grandmother, “Where is America?” She would point to the ground where I stood and say “You can dig a hole in the ground, when you reach the other side of the earth that is America!”

I did eventually dig a hole in the ground in China, but not to find America. It was the beginning for me as a pioneer in the stone industry. I began with investments and the sale of stone products. The rewarding successes in China encouraged me to expand my business to the United States.

In 1997, I started my business in America as GW (Great Wall) Stone producing natural stone & quartz. As my company grew to include more product lines beyond stone, we expanded our name identity to GW Gallery Group. Over the years, I built a level of respect for my company by approaching each and every project with honesty, integrity and ability.

One might say that I made a name for myself. Customers know that I personally stand behind the quality and craftsmanship of our work. With that vision in mind, in 2011, we re-branded GW Gallery Group as Mandy Li Collection.

Standing with me, are more than 40 dedicated individuals handling our day-to-day operations at our headquarters in Los Angeles, California with a satellite office in China. Our national sales force is unmatched in ability and knowledge. Our professional engineering specialists are top notch in the industry.

**Our entire staff is dedicated to our mission: to create beautiful environments that satisfy all of our customers’ needs from conception to completion.**

## THE MANDY LI PROMISE

**I have found that doing the right thing  
is always the correct business decision.**

This approach sets a standard for how we operate our company and allows Mandy Li Collection to have a straight forward, non-nonsense commitment to our customers and our people.

### **I have committed to the following:**

- **I will ensure that your expectations are met.**
- **I will ensure that you will be treated with respect and kindness.**
- **I will ensure that our values are not compromised.**
- **I will ensure that we listen to and anticipate your needs.**
- **I will ensure that our quality is exceptional.**
- **I will ensure that products will be delivered on time, every time.**
- **I will ensure that our workers both foreign and domestic are treated with respect.**

Sincerely



Mandy Li

## GREEN INITIATIVES

### **Mandy Li Collection is a green practicing company.**

Green is choosing to responsibly commit to the production of products that are safe for the planet and all its inhabitants. Mandy Li Collection takes that commitment personally. All materials used in our factories must meet or beat established health and safety standards.\*

In addition, Mandy Li Collection continually monitors all materials used for production in our Chinese factories. Mandy Li Collection demands that items used are classified as environmentally safe. This includes the regular use of lead free paints and finishes. Any use of leaded paint is rare. In those cases, the level of lead is minuscule and well below acceptable standards.

Mandy Li Collection requires that any formaldehyde used in our products meet or exceed United States and Chinese standards using either E1 or E2 glue. All wood products are certified for ISO9001 and comply with the California Air Resource Board (CARB) Airborne Toxic Control Measure (ATCM) to reduce formaldehyde emissions from composite wood products including plywood, medium density fiberboard (MDF), and particle board (PB). All our wood sources are purchased from Certified CARB-approved manufacturers. We also hold FSC (Forest Stewardship Council) Certification.

Our millwork factory is certified according to the stringent ISO 9001:2000 quality management system. Equipment is regularly upgraded to ensure that Mandy Li Collection remains at the forefront of advanced manufacturing technologies. Our certification covers the design, development, and manufacture of kitchen & bath cabinetry and millworks.

Our case goods construction consistently meets and exceeds standards and specifications considered as environmentally safe regarding wood and bamboo products.

### **GREEN – it's not a phase, it's our future.**

Mandy Li Collection is cognizant of the urgent need to preserve this planet. This starts and ends with our daily operation. This includes using recycled office products where possible, cleaning products that are natural and cruelty free, and especially water and waste conservation.



\*Details and verification of these standards are available upon request.

## LICENSE AND CERTIFICATIONS

**State of California Contractor's License**

**City of Alhambra Business Certificate**

**Southern California – Minority Business Enterprise (MBE) Certification**

**Southern California – Women Business Enterprise (WBE) Certification**

**Marble Institute of America Certification**

**Bovis Lend Lease and Summit on 6th Project Certificate**

(earning the Cal OSHA Golden Gate Partnership Award for this project)

**Webcor Builders and Seahaus Project Certificate**

(community service award for development efforts)



**MANDY LI**  
C O L L E C T I O N

### **CORPORATE HEADQUARTERS**

617 South Raymond Avenue, Alhambra, CA 91803-1534

Toll Free 877.497.8663 | Phone 626.457.1022 | Fax 626.457.1651

[info@MandyLiCollection.com](mailto:info@MandyLiCollection.com)

[www.MandyLiCollection.com](http://www.MandyLiCollection.com)

CORPORATE PARTNER

**NEWH**  
The Hospitality Industry Network



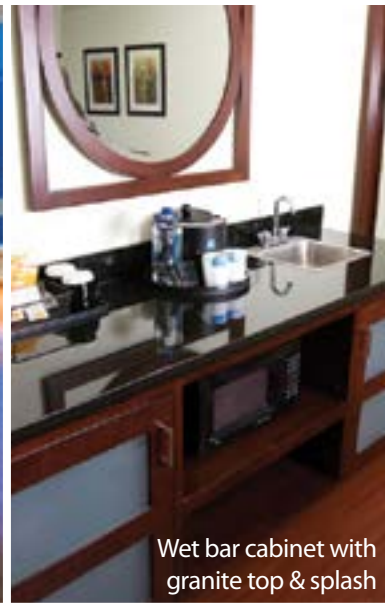
## HOSPITALITY PORTFOLIO



**The hospitality industry** demand environments to go beyond the basic. These spaces whether a hotel room, dining area or lobby desire quality furnishings that evoke the mood of the hospitality establishment. All of us at Mandy Li Collection we embrace this by providing quality custom-made furnishings with a fresh design aesthetic. The following portfolio shows a small sample of the projects we are proud to have produced from concept to completion.



JW Marriott at Tomorrow Square, Shanghai, China



Wet bar cabinet with granite top & splash

## HOSPITALITY INSTALLATIONS



Console



Headboard

Xianheng Hotel, Shaoxing, China



Console





Navarino Resort, Greece



## HOSPITALITY INSTALLATIONS



Plaza Royale Oriental, Shanghai, China





## DINING ENVIRONMENTS



Shaoxing Hotel, Shaoxing, Zhejiang, China





Bedroom Set



Dining Set



Headboard

**HILTON MARBRISA RESORT**



Dining Set



Headboard



Wall and Floor Tiles



## JONATHAN CLUB

Vanity Top and Back Splash





Seating Area



Living Room



Dining Set

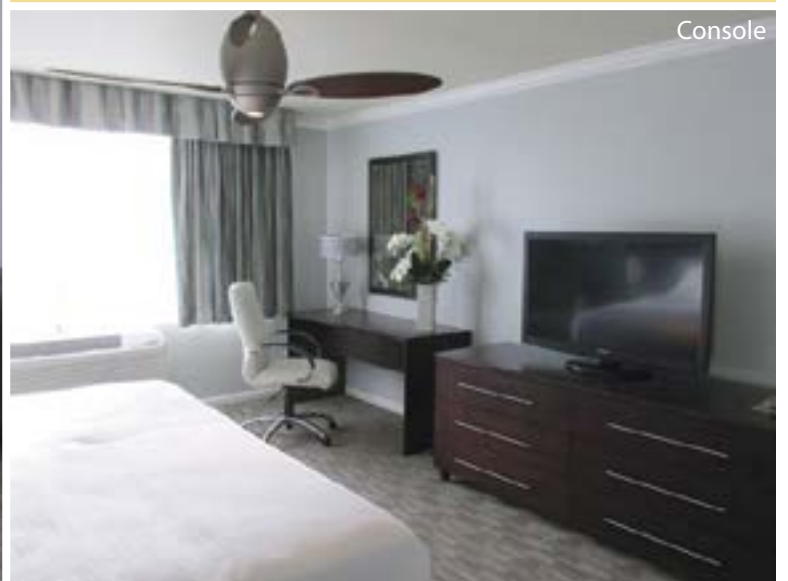


Bedroom Set

**DRIFTWOOD WORLDGATE RESORT**



Desk and Chair



Console





## VANITY BASE INSTALLATIONS



## INTERIOR DOORS



**Mandy Li Collection** is an experienced interior door manufacturer dedicated to offering high-quality doors with superior durability and enduring style.

Our doors are created in our own manufacturing facility where we guarantee the quality and performance of each and every door. We have a wide variety of styles and selections in wood species, glass and hardware. We always welcome the opportunity to create custom doors to meet your exact specifications.

At Mandy Li Collection we are confident that our doors will satisfy your needs from timely delivery to unique style and outstanding durability.

# MATERIALS & SPECIFICATIONS

## Custom Work

At Mandy Li Collection we specialize in custom orders. We can create custom sizes and designs to suit your project requirements. If one of our standard door designs does not satisfy your needs, we can custom build virtually any door design. From a straightforward change to one of our standard style doors, or a completely new and unique design, we welcome the opportunity to customize your doors exactly the way you want them.

Our made-to-order manufacturing process allows us to build each door parametrically, to your exact specifications. All of our doors are built with architecturally-correct stile and rail construction providing important advantages: Design flexibility, precise details and maximum stability.



*We use only highest quality, hand-selected veneers and lumber for our wood doors. We can also provide virtually any other wood species on a custom quote basis.*

## Door Specifications

---

**Width:** 18" | 22" | 24" | 30" | 32" | 36" | Custom

**Height:** 80" | Custom

**Thickness:** 1-3/8" | 1-3/4"

**Finish:** Painted, Stained or Custom

**Content:** Solid Wood, High Density Fiberboard (HDF), Composite Core, Glasses, Acrylic, Custom

**Wood Species:** Birch, Walnut, Maple, Oak, Cherry, High Pressure Laminate (HPL), Jade Wood (Engineered Wood), Custom



# MATERIALS & SPECIFICATIONS

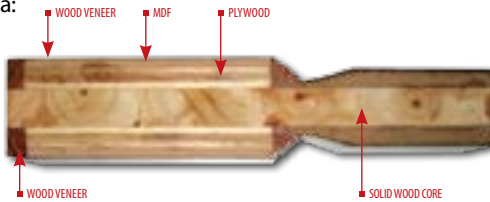
## Fine Craftsmanship

We are an experienced interior door manufacturer. Each step in the production process has been developed and designed specifically to provide exceptional strength and durability. The way we make doors truly sets us apart from our competitors.

## Quality Materials

Each of our wood doors comprise a:

- Solid Wood Core
- Plywood Layer
- MDF Layer
- Wood Veneer Skin



Our wood doors are made with a high-density, solid wood core that maximizes structural strength and minimizes water condensation effects. We use thick, solid wood edges for enhanced weather resistance and durability. The next layer of plywood provides additional strength and insulation. The MDF layer maintains surface flatness and smoothness, and it also makes our doors resistant to the dangers of warping, cracking and shrinkage. A wood veneer is then adhered to the MDF layer with just the right amount of heat and pressure. This procedure enhances sound insulation, heat preservation and flame retardancy. Our doors are constructed specifically to withstand harsh weather conditions.

## Finishing

We take pride in finishing our doors with care. We apply three layers each of primer and stain. Each application of stain is followed by a surface sanding to near perfection. Our doors are delivered to you with a silky smooth, long-lasting and dampness-resistant finish. Custom paint finishes are also available upon request.





## Slimline Barn Door Slider

Our Slimline Barn Door Slider is perfect for projects with limited space. The exposed track and guide assembly add a chic industrial style that give any room a modern edge. Compliment your project's unique design aesthetic with privacy glass options, and handles or door flush pulls to complete your look.

*Glass panels available in 1/4" tempered: frosted, ribbed and patterned; 5/16" laminated/obscure; and 1/2" laminated cracked/clear, obscure and color. Custom options are also available.*



## Double Slimline Barn Door Slider

---

Twice as nice, use our Double Barn Door Slider to create more impact in a room. Available as shown, with exposed industrial-style hardware or with matching wood valance.

*Glass panels available in 1/4" tempered: frosted, ribbed and patterned; 5/16" laminated/obscure; and 1/2" laminated cracked/clear, obscure and color. Custom options are also available.*



## **Slimline Barn Door Slider with Valance**

---

Take the sleek style of our Barn Door Slider one step further with the valance option. The bold, clean lines of the valance will add structure and dimension to your interior spaces.

*Pages 30-31 have our Handle and Door Flush Pull options. Our Slimline Barn Door Sliders are also available in double door.*



## High-Pressure Laminate Door

---

Our High-Pressure Laminate doors are built to last, and add a rich warmth to your rooms. Customize the look with your choice of wood species and panel design options.

*HPL doors are often chosen for their clean look, superior durability in high-traffic spaces and ease of care.*





## Three Panel Glass/Acrylic

---

Our three panel door is a beautiful alternative to the standard interior door. With a multitude of glass options, this door provides privacy while also allowing light diffusion throughout your spaces.

*Glass panels available in 1/4" tempered: frosted, ribbed and patterned; 3/16" laminated/obscure; and 1/2" laminated cracked/clear, obscure and color. Custom options are also available.*



## Shoji Screen Style Door

---

We offer the timeless design of a Shoji screen door, expertly crafted into a modern and durable version. This interior door solution brings a Zen-like elegance to your interior designs.

*Custom larger Shoji grid pattern or alternate glass/acrylic options are available.*



## Flush Door with 4-Way Book Match Veneer

---

The radiating symmetry of this design is created with a rich and lustrous book-matched wood veneer. This door has excellent sound retardant qualities and its flush design works equally well in traditional or modern environments.

*Ask your Mandy Li Collection Representative about our color-matching capabilities.*



## Single Lite

---

This classic door is one of our most popular selections. Its simple design and ability to meld with many interior design schemes make it an effortless choice.

*Pages 30-31 have our Handle and Door Flush Pull options.*



## Triple Raised Panel

---

Solid construction and clean lines make this a natural choice for any project. The solid core through-out gives this door excellent ratings in privacy, safety and sound retardancy. We can customize any door to suit your needs with species, hardware and finish.

*Ask your Mandy Li Collection Representative about our color-matching capabilities.*



## Shaker Style Single Panel

---

The simplicity of this Shaker style door allows the wood grain to be the main focus. A popular and affordable choice for soothing environments where the simple warmth of wood says it all.

*Pages 30-31 have our Handle and Door Flush Pull options.*





## Pacific Rim

---

Looking for something with a Pan-Asian flair? Our Pacific Rim door is sure to give an exotic flavor to any room. Delicate yet durable, this door is sure to enhance your interior environment.

*Ask your Mandy Li Collection Representative about our color-matching capabilities.*



## Louvered Door

---

Our Louvered doors blend well with many types of architecture and decor. From Plantation to Colonial, this door will bring an added dimension and interest to your Interior projects.

*Pages 30-31 have our Handle and Door Flush Pull options.*



# Door Track and Glide System

---



All of our sliding doors can be easily installed with our track and glide systems that can be exposed (as shown) or hidden with a matching wood valance



# Door Framing / Casing

Frames/Casing can be built and installed to match your door selection.



# Door Handles

Custom Sizes Available to fit your specifications.



## M0503

**MATERIAL:** Stainless Steel  
**FINISH:** Brushed Stainless Steel  
**HANDEL LENGTH:** 6 1/2"



## M0507

**MATERIAL:** Stainless Steel  
**FINISH:** Brushed Stainless Steel  
**HANDEL LENGTH:** 6 5/8"



## M1006

**MATERIAL:** Zinc  
**FINISH:** Satin Nickel  
**HANDEL LENGTH:** 6 1/2"



## M1206

**MATERIAL:** Zinc  
**FINISH:** Satin Nickel  
**HANDEL LENGTH:** 6 1/2"



## M1807

**MATERIAL:** Zinc  
**FINISH:** Satin Nickel  
**HANDEL LENGTH:** 4 5/8"



## M2003

**MATERIAL:** Zinc  
**FINISH:** Satin Nickel  
**HANDEL LENGTH:** 7 3/4"



## W0401

**MATERIAL:** Stainless Steel  
**FINISH:** Brushed Stainless Steel  
**HANDEL LENGTHS:** 7 7/8" / 9 7/8"



## M1308

**MATERIAL:** Zinc  
**FINISH:** Satin Nickel  
**HANDEL LENGTH:** 7 3/5"



## M1205

**MATERIAL:** Zinc  
**FINISH:** Satin Nickel  
**HANDEL LENGTH:** 4 1/2"



## M1505

**MATERIAL:** Zinc  
**FINISH:** Satin Nickel  
**HANDEL LENGTH:** 6 1/2"



## M1401

**MATERIAL:** Zinc  
**FINISH:** Satin Nickel  
**HANDEL LENGTH:** 6 5/8"



## M1506

**MATERIAL:** Stainless Steel  
**FINISH:** Brushed Stainless Steel  
**HANDEL LENGTHS:** 6" / 7 1/4"



## M1601

**MATERIAL:** Zinc Alloy  
**FINISH:** Antique Bronze  
**HANDEL LENGTH:** 6"



## M1001

**MATERIAL:** Zinc Alloy  
**FINISH:** Satin Nickel  
**DIAMETER:** 1 1/4"



## M1002

**MATERIAL:** Zinc Alloy  
**FINISH:** Brushed Nickel  
**DIAMETER:** 1 1/4"

# Door Flush Pulls



## L34036A

**MATERIAL:** Zinc Alloy  
**FINISH:** Stainless Steel  
**SIZE:** 35 x 110 mm



## L28009

**MATERIAL:** Zinc Alloy  
**FINISH:** Stainless Steel  
**SIZE:** 40 x 120 mm



## L28028

**MATERIAL:** Stainless Steel  
**FINISH:** Stainless Steel  
**SIZE:** 60 x 180 mm



## L29201

**MATERIAL:** Stainless Steel  
**FINISH:** Stainless Steel  
**SIZE:** 41 x 108 mm



## L29202

**MATERIAL:** Stainless Steel  
**FINISH:** Stainless Steel  
**SIZE:** 41 x 108 mm



## L29203

**MATERIAL:** Stainless Steel  
**FINISH:** Stainless Steel  
**SIZE:** 41 x 108 mm

# Hinges



## L93903171

**MATERIAL:** Stainless Steel  
**FINISH:** Stainless Steel  
**THICKNESS:** 25 mm  
**HEIGHT:** 107 mm  
**SUPPORT CAPACITY:** 40kg



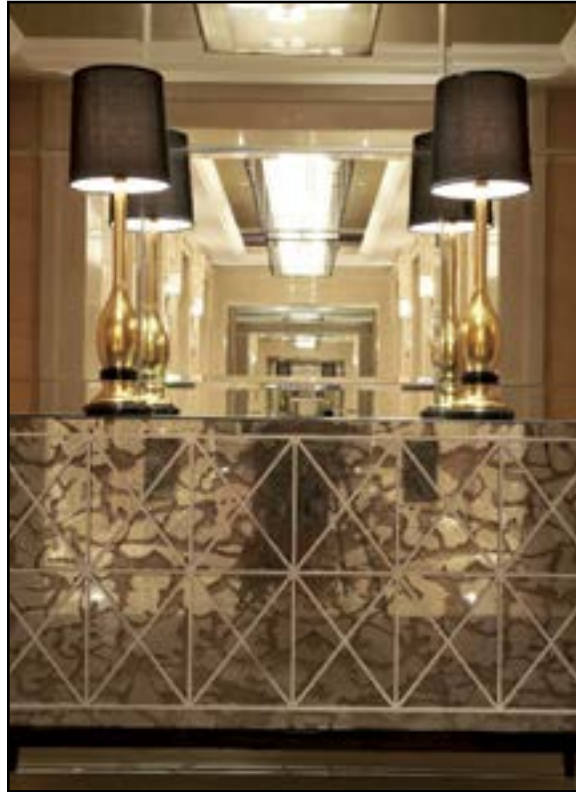
## L93903172

**MATERIAL:** Stainless Steel  
**FINISH:** Polished Brass  
**THICKNESS:** 25 mm  
**HEIGHT:** 107 mm  
**SUPPORT CAPACITY:** 40kg





## CUSTOM FABRICATION



**Today the hospitality industry** has a constant need for providing environments which evoke an inviting atmosphere to their patrons.

Custom Fabrication of hospitality furniture is one of the Mandy Li Collection core abilities and this alone sets us apart from our competitors. We pride ourselves in the diversity of our unique designs and the durable construction of each and every piece that comes out of our factory.

At Mandy Li Collection we are constantly striving to provide only the best-in-class products and services to our clientele. Our number one goal is to listen to your needs and create custom furniture pieces that ensure the design and functionality vision is met above and beyond with astute attention to cost. The following pages showcase a sampling of the custom fabricated pieces that Mandy Li Collection produces from concept to completion.



*The illusion expensive...the reality affordable.®*



Unique design combined with color  
creates depth to any environment.







Mandy Li Collection offers custom made pieces that are best-in-class when it comes to design, durability and quality craftsmanship.





We strive to always meet our clients vision and design intent in all the pieces we create.









*The illusion expensive...the reality affordable.®*











Creating a cohesive look that is made from quality materials can make an elegant statement within a designed space.





*The illusion expensive...the reality affordable.®*





Our attention to detail and the ability to understand the balance between design and functionality sets us apart from our industry competitors.







*The illusion expensive...the reality affordable.®*





Our craftsmen build durable pieces that can handle the heavy wear and tear of the hospitality industry.





Simplistic or detailed, each of our vanities are made with quality design and functionality in mind.









*The illusion expensive...the reality affordable.®*



## SURFACE MATERIALS



**Mandy Li Collection believes in using only quality materials in the pieces we produce. Our surface materials include our signature Jade Wood, Granite, Marble and Quartz.**

Jade Wood is our signature sustainable product that is an engineered wood which derives from fast growing trees and bamboo. Besides being an Eco-friendly product it is also a beautiful and versatile product that is cost efficient and yet still holds to the high-quality standards that our company encompasses.

Our diverse product line of granite, quartz and marble boast an inherent beauty within the stone texture while enhancing the designs of the furniture pieces and counters that utilize the surface material.

Each one of these surfaces compliment and complete the Mandy Li Collection product offering.



## ABOUT JADE WOOD

### Jade Wood — Our Signature Sustainable Product

Value engineered wood designs from sustainable forests.

Our Mandy Li Collection Jade Wood can replicate any high end wood such as Cherry, Walnut, Ebony, Wenge, White Oak, Santos Rosewood and Zebra that you may need for your Hospitality Projects, by using our ability to copy even the most expensive wood color and grains.

With Sustainable Forests we have the capability to save 100 year old trees by using fast growing and bamboo trees which save our precious resources using the newest science. We can give you the depth of color and texture without the cost.

Since Natural Wood has inherent flaws, we can eliminate defects and because there are no defects, there is no loss of materials, timely delays and rising replacement costs.

Compared with natural wood, Jade Wood has the following characteristics:

**1| It is rich in colors and texture.**

Jade Wood is designed with the aid of computer, and it has various colors and texture that natural wood does not have. It is brighter in colors and more three dimensional in appearance, and its designs are more dynamic and lively. It fully satisfies people's diversified needs for different kinds of lumber and individual consumer mentality.

**2| It has superior product performance.**

Jade Wood is superior to raw-material natural wood in terms of density and static bending intensity. It is anti-corrosive, moth-resistant, moisture-resistant, and easy processing. Meanwhile, it can be processed into lumber of different width and size according to different demands, and it solves the limitation in natural lumber's diameter grade.

**3| Finished products of Jade Wood have a high utilization rate and it is more economical when used in decorations.**

Jade Wood does not have natural wood's inherent natural defects such as wormholes, knurs and discolorations, etc. Therefore, it is an almost perfect decorative material without any defects. At the same time, there is some regularity in its texture and colors. Therefore, it successfully avoid the problem of being difficult to be spliced due to differences in texture and colors in the process of decoration, it is almost 100% usable with minimum wastage.

**4| It is a real green, sustainable, and environment-friendly product.**

The birth of Jade Wood product is an excellent replacement of increasingly scarce natural wood resources. It not only satisfies people's need for decoration effect of different types of wood and need for different amount of lumber, but sustains precious forest resources. Meanwhile, Jade wood is processed by using the adhesive that's low in Formaldehyde.



*Please contact our office for more information.*

# Jade Wood — Color Samples

Our signature Jade Wood does not contain any natural defects such as worm holes, knurs and discolorations and is superior to raw-material natural wood in terms of density and static bending intensity. Contact us to find out more information.

*Samples shown are not exact color and scale.*



Ebony 115-3862S



Ebony 069S



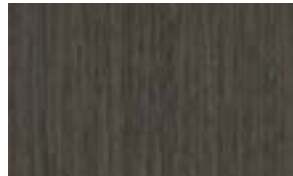
Ebony 070C



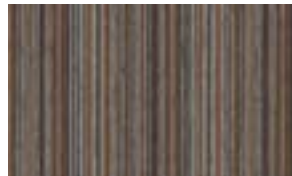
Ebony 133TS



Black Cat's Eye #2



Black Oak 15DS



Decowood 013Q



Black Zebra wood



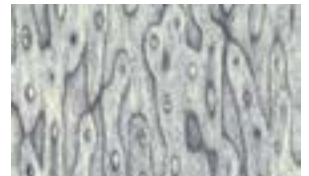
Black Cat's Eye



Wenge 120Q



Silver Oak 35



Grey Cat's Eye



Marble



American Cherry



Bamboo Vertical



Silver Lacewood



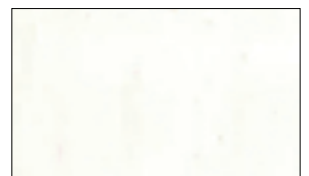
Burl T13



Ash M05Q



White Ash 507PQ



White Bird's Eye

# Granite — Color Samples

Our Natural Stone Granite is an elegant and durable surface that adds dimension into any counter, furniture or interior space that it is integrated into the design. If you don't see what you are looking for we can match to your specific color requests. Contact us to find out more information.

*Samples shown are not exact color and scale. Contact us to find out more about our Natural Stone Granite selections.*

## GROUP I



Black & White (I)



Pink Luna (I)



Copper Rose (I)



St. Andrews Gray (I)

## GROUP II



Moon Pearl (II)



China Red (II)



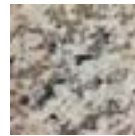
Beijing Gold Pink (II)



Almond Muave (II)

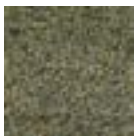


Tiger Skin Light (II)



Tiger Skin White (II)

## GROUP III



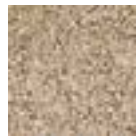
China Green (III)



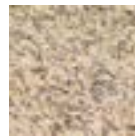
Azul Mahogany (III)



Misty Grey (III)



Sage Green (III)



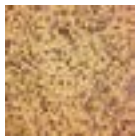
Tiger Skin Yellow (III)



Cherokee White (III)



Multi-Color Red (III)



Chrysanthemum (III)



Boamoral Rosa (III)



Beijing Gold (III)

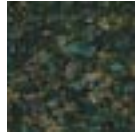
## GROUP IV



Absolute Black (IV)



Black Pearl (IV)



Verde Butterfly (IV)



Uba Tuba (IV)



Verde Pompeii (IV)



Tan Brown (IV)



New Mahogany (IV)



Sapphire Brown (IV)



Baltic Brown (IV)



Giallo Antico (IV)



Giallo Fiorito (IV)



Santa Cecilia Light (IV)



Kashmir White (IV)



Vizag Blue (IV)

## GROUP V



Black Galaxy (V)



Blue Pearl (V)



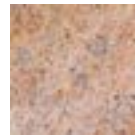
Black Impala (V)



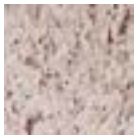
Maudura Gold (V)



Santa Cecilia (V)



Kashmir Gold (V)



Giallo Ornamental (V)

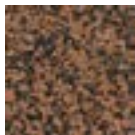


Canadian Gold (V)

## GROUP VI



Emerald Pearl (VI)



Boamoral Red (VI)



Giallo Veneziano (VI)



New Venetian Gold (VI)



# Marble — Color Samples

Our Marble is an elegant and durable surface that adds dimension into any counter, furniture or interior space that it is integrated into the design. If you don't see what you are looking for we can match to your specific color requests. Contact us to find out more information.

*Samples shown are not exact color and scale.*



Botticino Fiorito



Mocha Cream



Crema Marfil



China Marfil



Italian Cream



Galala Beige



Creamy Ivy



Emperador Light



Rosa Verona



Rojo Alicante



Crystal White



White Carrera



Emperador Dark



Dynasty Brown



White Fantasy



Black Classic

# Quartz Diamond Series — Color Samples

Our exclusive Quartz Diamond Series is an elegant and durable surface that adds dimension into any counter, furniture or interior space that it is integrated into the design. If you don't see what you are looking for we can custom match to your specific color requests. Contact us to find out more information.

PRICING KEY: (s) = Standard, (m) = Mid Range, (p) = Premium, (e) = Exclusive | *Samples shown are not exact color and scale.*



V-4402 (e)



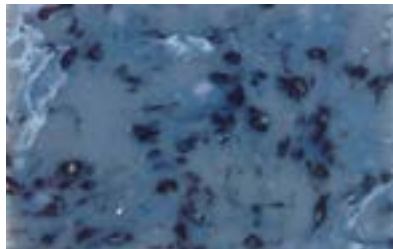
V-4405 (e)



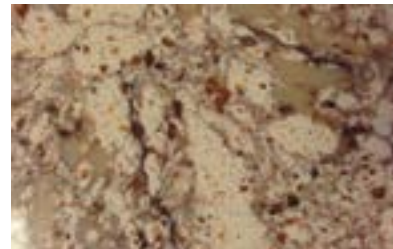
V-4407 (e)



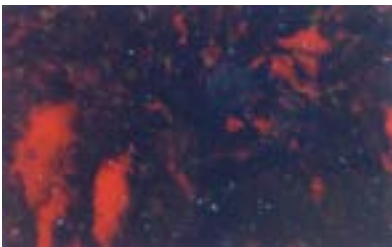
V-4413 (e)



V-4409 (e)



V-4408 (e)



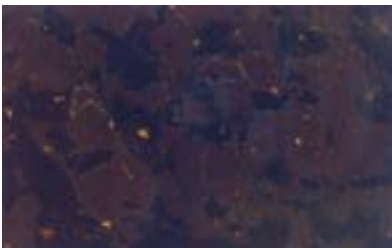
V-4401 (e)



V-4410 (e)



V-4412 (e)



V-4406 (e)



V-4403 (e)



V-4411 (e)



# Quartz — Color Samples

Our Quartz is an elegant and durable surface that adds dimension into any counter, furniture or interior space that it is integrated into the design. If you don't see what you are looking for we can custom match to your specific color requests. Contact us to find out more information.

PRICING KEY: (s) = Standard, (m) = Mid Range, (p) = Premium, (e) = Exclusive | *Samples shown are not exact color and scale.*



S-3302 (p)



U-1104 (s)



N-2202 (m)



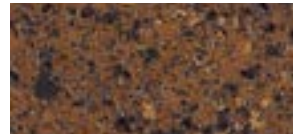
N-2215 (m)



U-1108 (s)



N-2209 (m)



N-2210 (m)



N-2219 (m)



U-1112 (s)



N-2218 (m)



N-2204 (m)



U-1132 (s)



U-1116 (s)



N-2214 (m)



N-2203 (m)



N-2205 (m)



N-2217 (m)



N-2211 (m)



N-2216 (m)



N-2212 (m)



U-1117 (s)



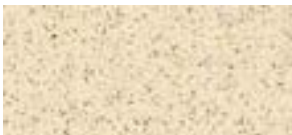
N-2201 (m)



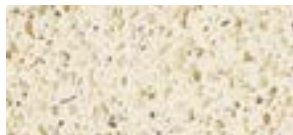
N-2206 (m)



U-1101 (s)



U-1113 (s)



U-1122 (s)



U-1121 (s)



N-2207 (m)



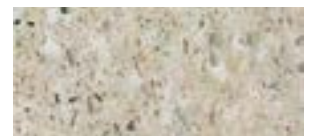
U-1103 (s)



U-1119 (s)



U-1173 (s)



N-2220 (m)

*More options on reverse side.*



# Quartz — Color Samples

Our Quartz is an elegant and durable surface that adds dimension into any counter, furniture or interior space that it is integrated into the design. If you don't see what you are looking for we can custom match to your specific color requests. Contact us to find out more information.

PRICING KEY: (s) = Standard, (m) = Mid Range, (p) = Premium, (e) = Exclusive | *Samples shown are not exact color and scale.*



GW805 (s)



GW937 (p)



GW815 (s)



GW868 (p)



GW207 (p)



GW943 (p)



GW942 (p)



GW801 (s)



GW803 (s)



GW857 (p)



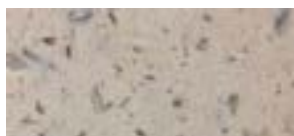
GW807B (s)



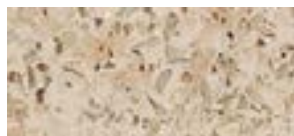
GW802 (s)



GW305 (m)



GW848 (s)



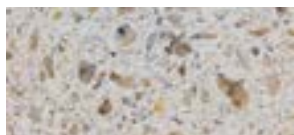
GW202 (m)



GW680 (m)



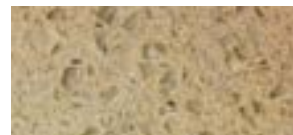
GW807A (s)



GW809 (s)



GW840 (s)



GW808 (s)



GW800 (s)



GW600 (s)



GW960 (p)



GW656 (m)



GW201 (m)



GW883 (m)



GW885 (m)



GW936 (p)



GW887 (m)

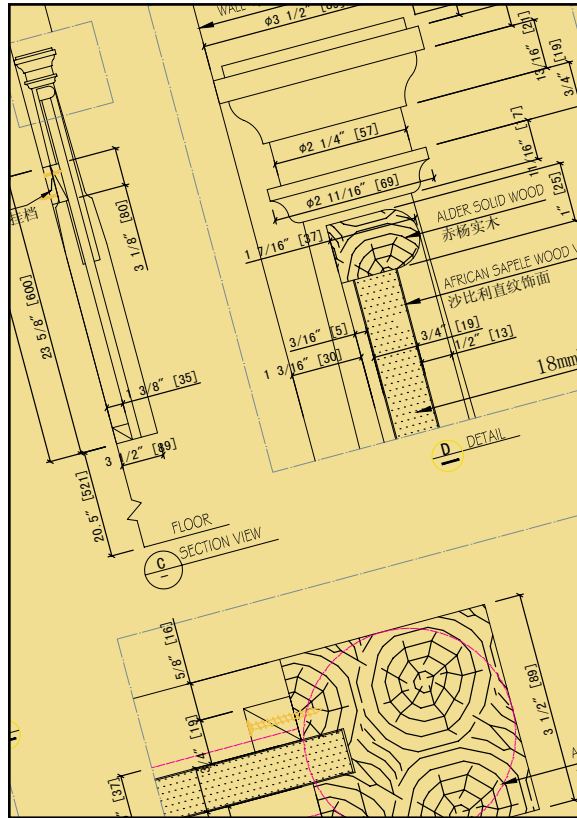


GW871 (p)



GW870 (p)

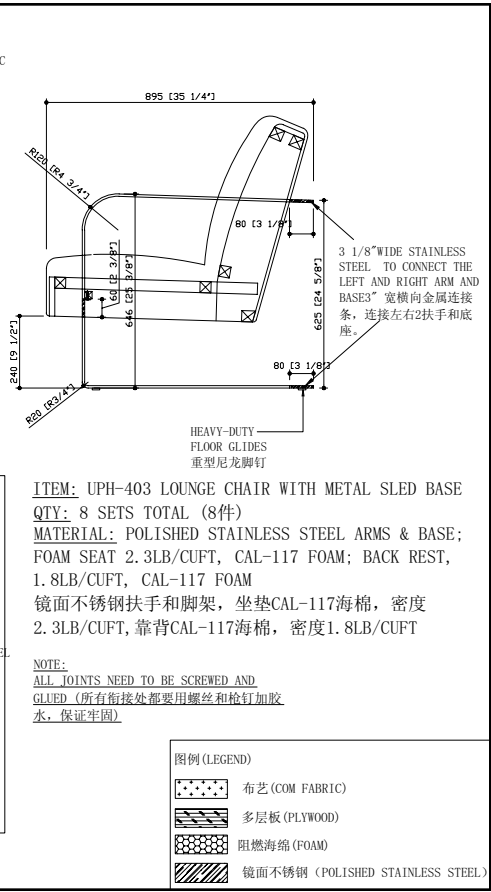
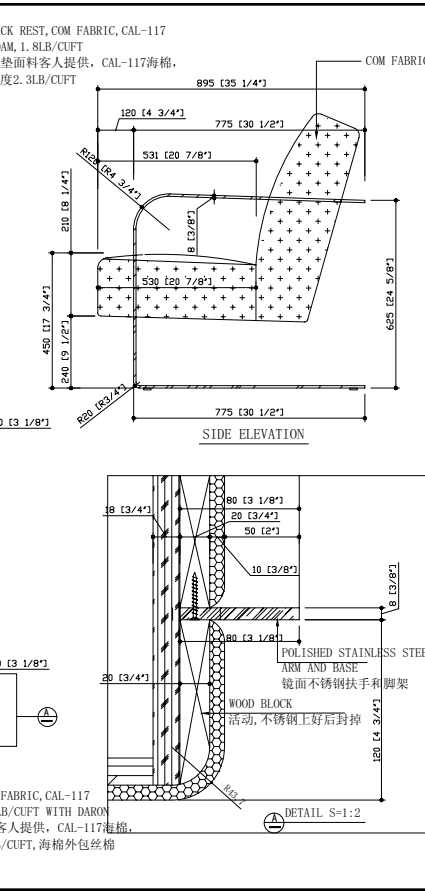
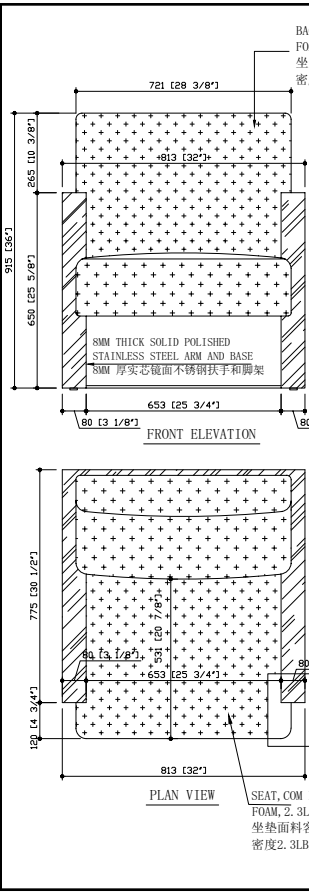
## SHOP DRAWINGS



**Our shop drawings** are created to be clear and complete information needed for construction and fabrication. The shop drawings are thoughtfully prepared with accurate details to best facilitate the architect's and engineer's approval.

In order to hold to the high quality standards that Mandy Li Collections embraces we understand the importance of good communication between our corporate headquarters and our China factories. Each shop drawing is detailed and instructions are explained in both the English and Chinese languages.

We take pride in the quality of our drawings and the details that encompass each set to ensure only the best quality and durability is delivered from concept to completion.



**ITEM:** UPH-403 LOUNGE CHAIR WITH METAL SLED BASE  
**QTY:** 8 SETS TOTAL (8件)  
**MATERIAL:** POLISHED STAINLESS STEEL ARMS & BASE;  
 FOAM SEAT 2.3LB/CUFT, CAL-117 FOAM  
 镜面不锈钢扶手和脚架, 坐垫CAL-117海棉, 密度2.3LB/CUFT, 靠背CAL-117海棉, 密度1.8LB/CUFT

**NOTE:**  
 ALL JOINTS NEED TO BE SCREWED AND GLUED (所有衔接处都要用螺丝和钉加胶水, 保证牢固)

**图例 (LEGEND)**

- 布艺 (COM FABRIC)
- 多层板 (PLYWOOD)
- 阻燃海棉 (FOAM)
- 镜面不锈钢 (POLISHED STAINLESS STEEL)

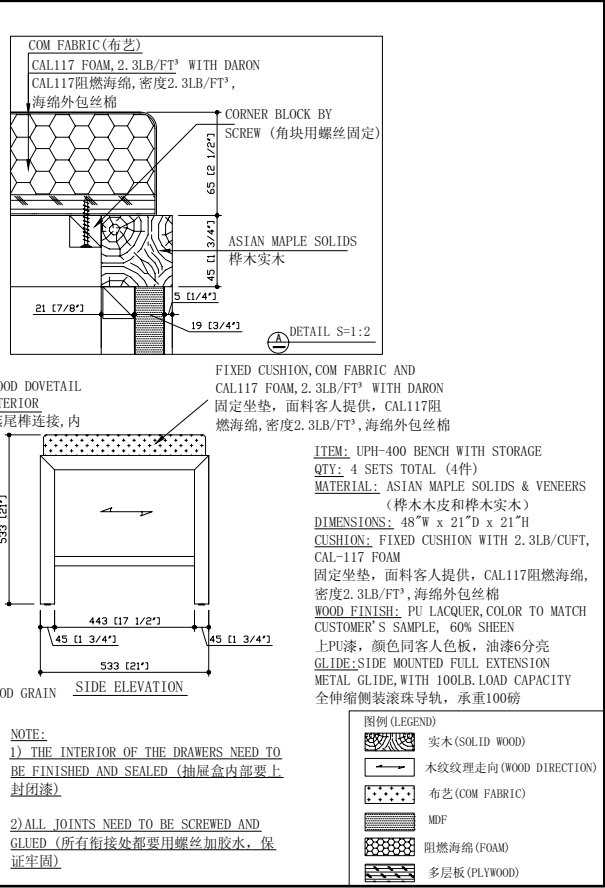
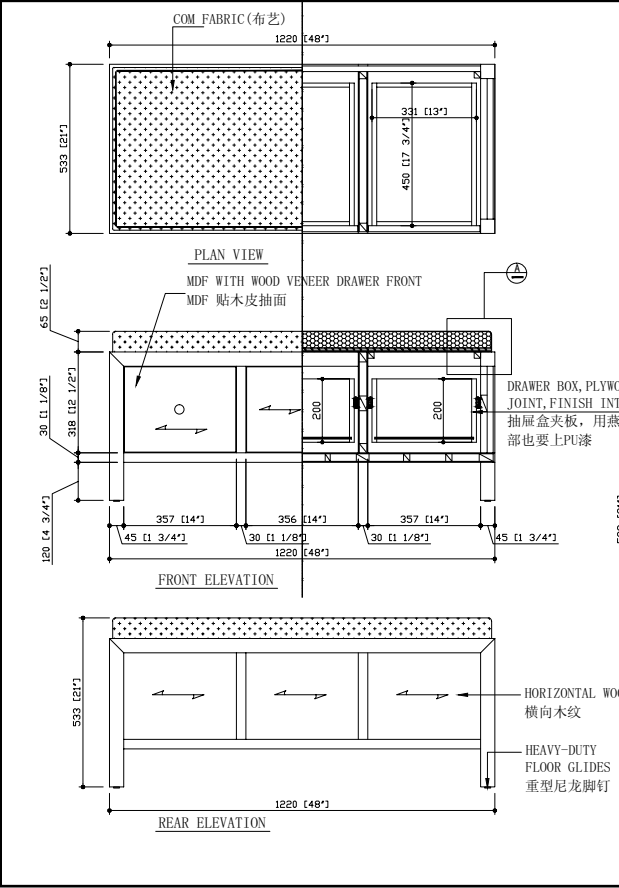
**MANDY LI COLLECTION**

617 South Raymond Avenue, Alhambra CA 91803  
 PH: 626-457-1022, 626-457-8863 Fax: 626-457-1651  
 info@mandycollection.com www.mandycollection.com

REVISIONS	
1.	
2.	
3.	

**HILTON WEST 57TH NY**

3rd SUBMITTAL FOR PRODUCTION  
 APPROVED BY:  
 APPROVAL DATE:  
 DRAWN BY: WC  
 DATE: 01-08-2014  
 SHEET NUMBER:  
**3 OF 3**



**ITEM:** UPH-400 BENCH WITH STORAGE  
**QTY:** 4 SETS TOTAL (4件)  
**MATERIAL:** ASIAN MAPLE SOLIDS & VENEERS  
 (桦木木皮和桦木实木)  
**DIMENSIONS:** 48"W x 21"D x 21"H  
**CUSHION:** FIXED CUSHION WITH 2.3LB/CUFT, CAL-117 FOAM  
 固定坐垫, 面料客人提供, CAL117阻燃海棉, 密度2.3LB/FT<sup>3</sup>, 海绵外包丝棉  
**WOOD FINISH:** PU LACQUER, COLOR TO MATCH CUSTOMER'S SAMPLE, 60% SHEEN  
 上PU漆, 颜色同客人色板, 油漆6分亮  
**GLIDE:** SIDE MOUNTED FULL EXTENSION METAL GLIDE, WITH 100LB. LOAD CAPACITY  
 全伸缩侧装滚珠导轨, 承重100磅

**图例 (LEGEND)**

- 实木 (SOLID WOOD)
- 木纹纹理走向 (WOOD DIRECTION)
- 布艺 (COM FABRIC)
- MDF
- 阻燃海棉 (FOAM)
- 多层板 (PLYWOOD)

**NOTE:**  
 1) THE INTERIOR OF THE DRAWERS NEED TO BE FINISHED AND SEALED (抽屉盒内部要上封闭漆)  
 2) ALL JOINTS NEED TO BE SCREWED AND GLUED (所有衔接处都要用螺丝加胶水, 保证牢固)

**MANDY LI COLLECTION**

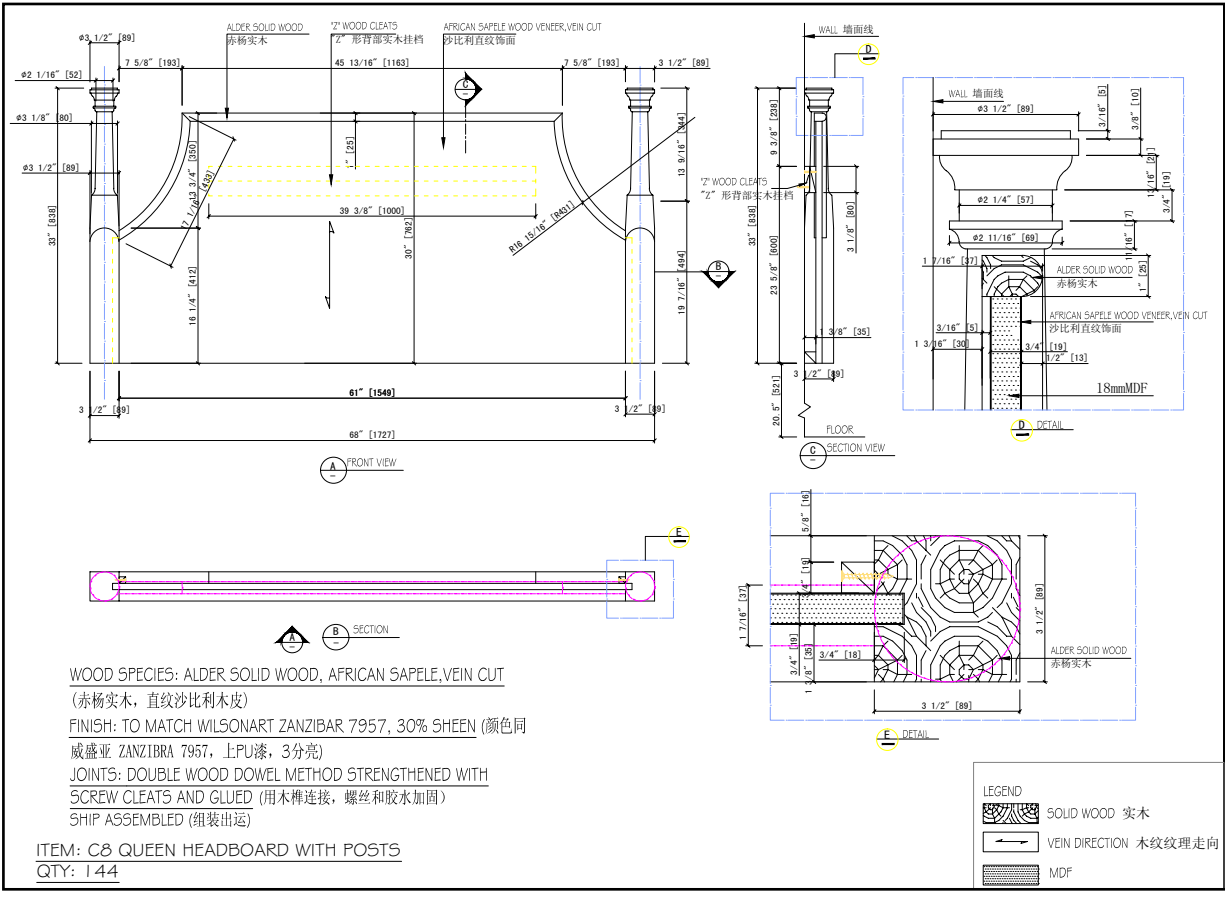
617 South Raymond Avenue, Alhambra CA 91803  
 PH: 626-457-1022, 626-457-8863 Fax: 626-457-1651  
 info@mandycollection.com www.mandycollection.com

REVISIONS	
1.	
2.	
3.	

**HILTON WEST 57TH NY**

3rd SUBMITTAL FOR PRODUCTION  
 APPROVED BY:  
 APPROVAL DATE:  
 DRAWN BY: WC  
 DATE: 01-08-2014  
 SHEET NUMBER:  
**1 OF 3**

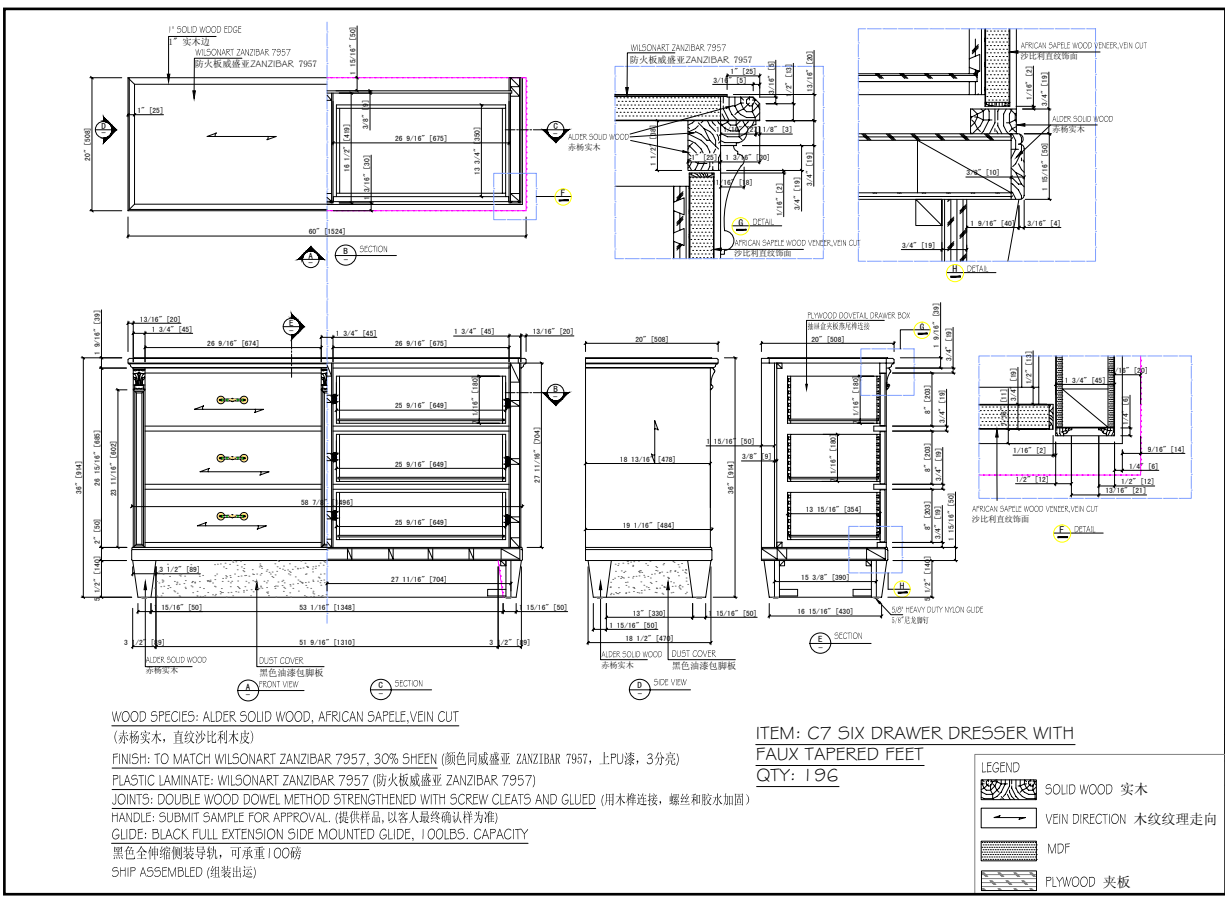




**MANDY LI COLLECTION**  
 617 South Raymond Avenue, Alhambra CA 91803  
 PH: 626 457 1022, 01 887 487 8663 Fax: 626 457 1651  
 info@MandyCollection.com www.MandyCollection.com

**WYNDHAM PATRIOT'S PLACE**

5TH SUBMITTAL FOR PRODUCTION  
 APPROVE BY:  
 APPROVE DATE:  
 BY: MLC  
 DATE: 05-09-2014  
 SHEET NUMBER:  
 1 OF 8

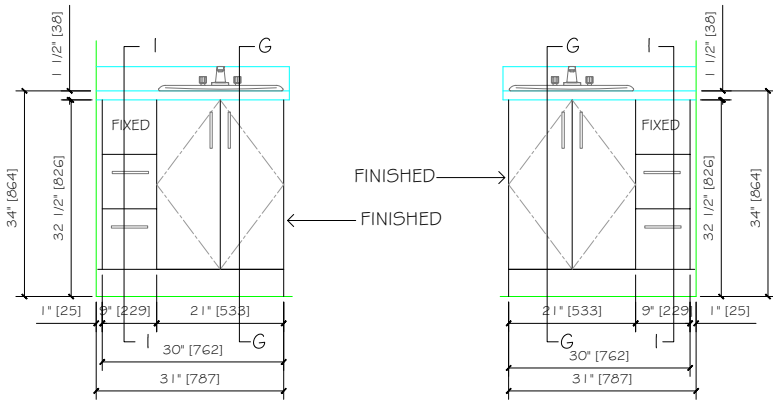


**MANDY LI COLLECTION**  
 617 South Raymond Avenue, Alhambra CA 91803  
 PH: 626 457 1022, 01 887 487 8663 Fax: 626 457 1651  
 info@MandyCollection.com www.MandyCollection.com

**WYNDHAM PATRIOT'S PLACE**

5TH SUBMITTAL FOR PRODUCTION  
 APPROVE BY:  
 APPROVE DATE:  
 BY: MLC  
 DATE: 05-09-2014  
 SHEET NUMBER:  
 4 OF 8





ELEVATION  
BATH

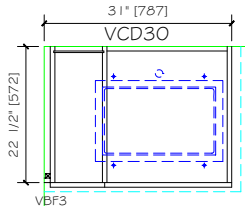
ELEVATION  
BATH

DOORS STYLE: FLAT SLAB  
 DRAWER STYLE : FLAT SLAB  
 DRAWER / DOOR MATERIAL: MDF W/  
 CHINESE BIRCH VENEER  
 DOOR / DRAWER SEMI-GLOSS STAIN:  
 PER CUSTOMER'S APPROVED SAMPLE (TO  
 MATCH HOMEWOOD SUITES PROJECT)  
 DOOR / DRAWER HANDLES: 6" LONG PULL BAR  
 CARCASS STYLE: EURO  
 CARCASS MATERIAL: PARTICLE BOARD W/  
 MAPLE COLOR MELAMINE AND PVC EDGE  
 BANDING MATCHING STAIN COLOR  
 DRAWER STYLE: PARTICLE BOARD SQUARE  
 JOINT CORNER  
 DRAWER GLIDES: FULL EXTENSION  
 HINGES: CONCEALED (OPENS @ 110°)

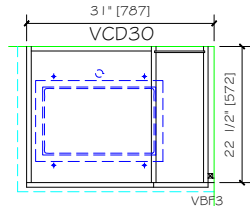
NOTE: TO BE SHIPPED FULLY ASSEMBLED.

门款: 平板贴皮门  
 斗面款式: 平板贴皮  
 斗/门材料: MDF 贴中国桦木皮  
 斗/门油漆颜色: 根据客人提供色板,  
 同HOMEWOOD SUITES PROJECT项目一样  
 斗/门拉手: 6"长拉手  
 橱柜类型: 欧式  
 箱体材料: 枫木色三聚氨胺板, 封边条颜色同门色  
 抽屉和样式: 刨花板螺丝结构  
 导轨: 全伸缩导轨  
 铰链: 暗铰链, 最大开启角度110°

注意: 组装出货柜



PLAN VIEW  
BATH  
STUDIO (LEFT)---42



PLAN VIEW  
BATH  
STUDIO (RIGHT)---43

ROOM: 101,104,107,108,111,112  
 201,204,207,208,211,212,217,224,229  
 301,304,307,308,311,312,,317,324,329  
 401,404,407,408,411,412,417,424,429  
 501,504,507,508,511,512,517,524,529

ROOM:  
 STUDIO 102,106,109,110  
 202,206,209,210,213,214,215,219,227,231  
 302,306,309,310,313,314,315,319,327,331  
 402,406,409,410,413,414,415,419,427,431  
 502,506,509,510,513,515,519,527,531



617 South Burnham Avenue, Alhambra, CA 91803  
 PH: 626-457-1022, 626-457-8663 Fax: 626-457-1651  
 info@MandyLiCollection.com www.MandyLiCollection.com

REVISIONS	
1.	
2.	
3.	

Townplace Suites, Thunder Bay,  
Ontario, Canada

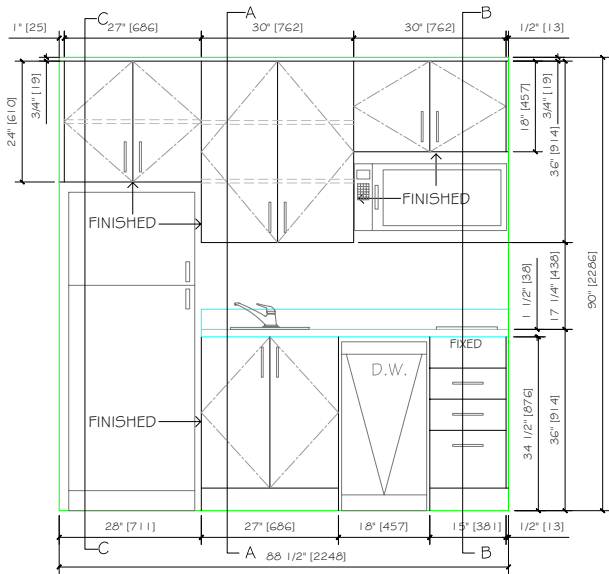
APPROVE BY:

5TH SUBMITTAL FOR PRODUCTION

DATE: 05/13/2013

SHEET NUMBER:

10 OF 15



ELEVATION

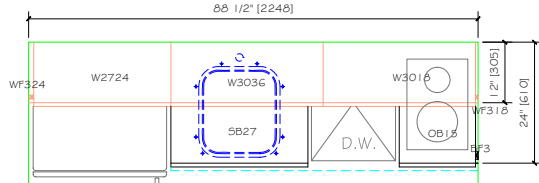
ROOM: 101,104,107,108,111,112  
 201,204,207,208,211,212,217,224,229  
 301,304,307,308,311,312,,317,324,329  
 401,404,407,408,411,412,417,424,429  
 501,504,507,508,511,512,517,524,529

DOORS STYLE: FLAT SLAB  
 DRAWER STYLE : FLAT SLAB  
 DRAWER / DOOR MATERIAL: MDF W/  
 CHINESE BIRCH VENEER  
 DOOR / DRAWER SEMI-GLOSS STAIN:  
 PER CUSTOMER'S APPROVED SAMPLE (TO  
 MATCH HOMEWOOD SUITES PROJECT)  
 DOOR / DRAWER HANDLES: 6" LONG PULL BAR  
 CARCASS STYLE: EURO  
 CARCASS MATERIAL: PARTICLE BOARD W/  
 MAPLE COLOR MELAMINE AND PVC EDGE  
 BANDING MATCHING STAIN COLOR  
 DRAWER STYLE: PARTICLE BOARD SQUARE  
 JOINT CORNER  
 DRAWER GLIDES: FULL EXTENSION  
 HINGES: CONCEALED (OPENS @ 110°)

NOTE: TO BE SHIPPED FULLY ASSEMBLED.

门款: 平板贴皮门  
 斗面款式: 平板贴皮  
 斗/门材料: MDF 贴中国桦木皮  
 斗/门油漆颜色: 根据客人提供色板,  
 同HOMEWOOD SUITES PROJECT项目一样  
 斗/门拉手: 6"长拉手  
 橱柜类型: 欧式  
 箱体材料: 枫木色三聚氨胺板, 封边条颜色同门色  
 抽屉和样式: 刨花板螺丝结构  
 导轨: 全伸缩导轨  
 铰链: 暗铰链, 最大开启角度110°

注意: 组装出货柜



PLAN VIEW  
KITCHEN STUDIO (LEFT)  
QTY---42



617 South Burnham Avenue, Alhambra, CA 91803  
 PH: 626-457-1022, 626-457-8663 Fax: 626-457-1651  
 info@MandyLiCollection.com www.MandyLiCollection.com

REVISIONS	
1.	
2.	
3.	

Townplace Suites, Thunder Bay,  
Ontario, Canada

APPROVE BY:

5TH SUBMITTAL FOR PRODUCTION

DATE: 05/13/2013

SHEET NUMBER:

1 OF 15

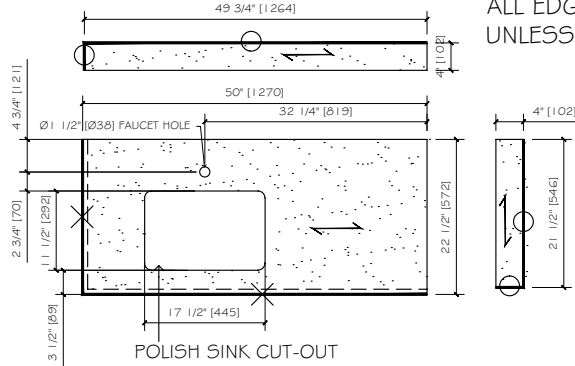
BATH TOP UNIT A1.1,A1.1R,A1.2R,A1.3,A1.4R

QUANTITY: 7  
MATERIAL: SCHEME 3-- S-3301 QUARTZ

NOTE: 1" EXTEND POLISHED ON THE BACK OF SINK CUTOUTEDGE FOR ALL UNDERMOUNT SINKS  
台下盆水盆洞，台面背后水盆洞四周要磨光1"

SINK: DECOLAV 1402(U/M),BY OTHERS  
FAUCET: SYMMONS SL5-3612,BY OTHERS

ALL EDGES TO BE 3/4" SAW CUT UNLESS OTHERWISE NOTED

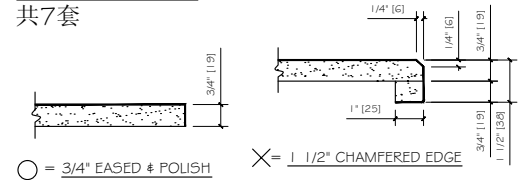


SCHEME 3: MATERIAL--GW S-3301 QUARTZ (ALTERNATE TO FROST WHITE CQ901)

石种: S-3301,房间号如下:

PHASE-2 (第2批): 1014,4014  
PHASE-3 (第3批): 2024,3028  
PHASE-5 (第5批): 1072,4072  
PHASE-6 (第6批): 2096

TOTAL: 7-UNITS  
共7套



○ = 3/4" EASED # POLISH

✕ = 1 1/2" CHAMFERED EDGE



617 South Raymond Avenue, Alhambra CA 91803  
PH: 626 457 1022 Or 887 497 8663 Fax: 626 457 1651  
info@MandyliCollection.com www.Mandylicollection.com

Broadstone Apartments-San Diego,CA

SIGNED SHOP DRAWING INDICATES BUYERS AUTHORIZATION TO PROCEED WITH FABRICATION AS SHOWN PER SHOP DRAWING AND, IS SOLELY RESPONSIBLE FOR ANY OMISSIONS OR ERRORS.

FOR PRODUCTION

APPROVED BY:

APPROVED DATE:

QUOTE REF. #A022613-2

DATE: 06-27-2014

BY: AP

PAGE 1 E OF 10

KITCHEN TOP UNIT  
A1.1,A1.1R,A1.2R,A1.3,A1.4R  
(LEVELS 1~3)

QUANTITY: SCHEME 1--5,SCHEME 2--5

SINK: AMERISINK AS135(U/M),BY OTHERS  
FAUCET: DANZE D455158,BY OTHERS

ALL EDGES TO BE 3/4" SAW CUT UNLESS OTHERWISE NOTED

SCHEME 1: MATERIAL--GW UL-4350 QUARTZ (ALTERNATE TO BRONZE CQ802)

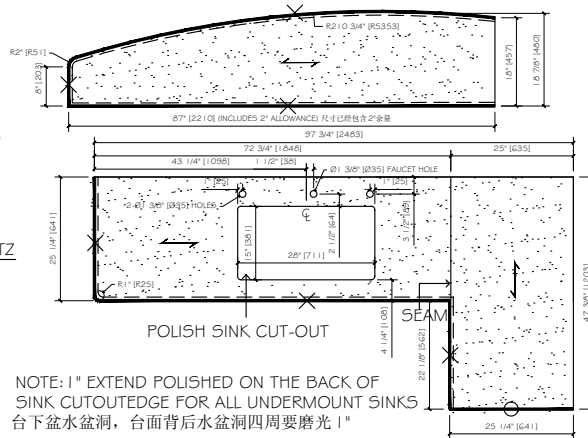
石种: UL-4350,房间号如下:

PHASE-2 (第2批): 2014  
PHASE-3 (第3批): 1028,3024  
PHASE-5 (第5批): 2072  
PHASE-6 (第6批): 3096  
TOTAL: 5-UNITS  
共5套

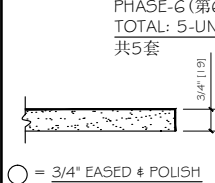
SCHEME 2: MATERIAL--GW S-3301 QUARTZ (ALTERNATE TO FROST WHITE CQ901)

石种: S-3301,房间号如下:

PHASE-2 (第2批): 3014  
PHASE-3 (第3批): 1024,2028  
PHASE-5 (第5批): 3072  
PHASE-6 (第6批): 1096  
TOTAL: 5-UNITS  
共5套

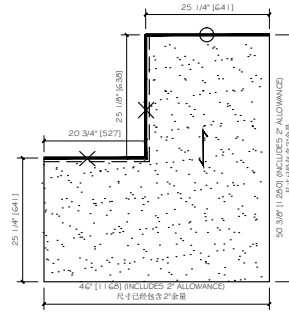


NOTE: 1" EXTEND POLISHED ON THE BACK OF SINK CUTOUTEDGE FOR ALL UNDERMOUNT SINKS  
台下盆水盆洞，台面背后水盆洞四周要磨光1"



○ = 3/4" EASED # POLISH

✕ = 1 1/2" CHAMFERED EDGE



617 South Raymond Avenue, Alhambra CA 91803  
PH: 626 457 1022 Or 887 497 8663 Fax: 626 457 1651  
info@MandyliCollection.com www.Mandylicollection.com

Broadstone Apartments-San Diego,CA

SIGNED SHOP DRAWING INDICATES BUYERS AUTHORIZATION TO PROCEED WITH FABRICATION AS SHOWN PER SHOP DRAWING AND, IS SOLELY RESPONSIBLE FOR ANY OMISSIONS OR ERRORS.

FOR PRODUCTION

APPROVED BY:

APPROVED DATE:

QUOTE REF. #A022613-2

DATE: 06-27-2014

BY: AP

PAGE 1 A OF 10



MANDY LI  
COLLECTION

**CORPORATE HEADQUARTERS**

617 South Raymond Avenue, Alhambra, CA 91803-1534

Toll Free 877.497.8663 | Phone 626.457.1022 | Fax 626.457.1651

[info@MandyLiCollection.com](mailto:info@MandyLiCollection.com)

[www.MandyLiCollection.com](http://www.MandyLiCollection.com)

CORPORATE PARTNER

**NEWH**  
The Hospitality Industry Network